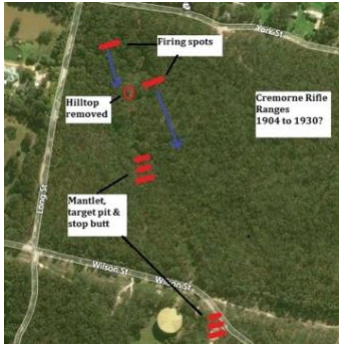


1. Cremorne Rifle Range Butts.

The Cremorne Rifle club operated from 1904 to the 1930's. Short and long-range shooting occurred. The long-range butts are the start point for the walk.



2. Chinnery Mine

Was one of two named mines in the Park. "Golden specimens obtained by Mr J Chinnery..... weight 38ozs and 5dwts". Source: Ballarat Star November 1898



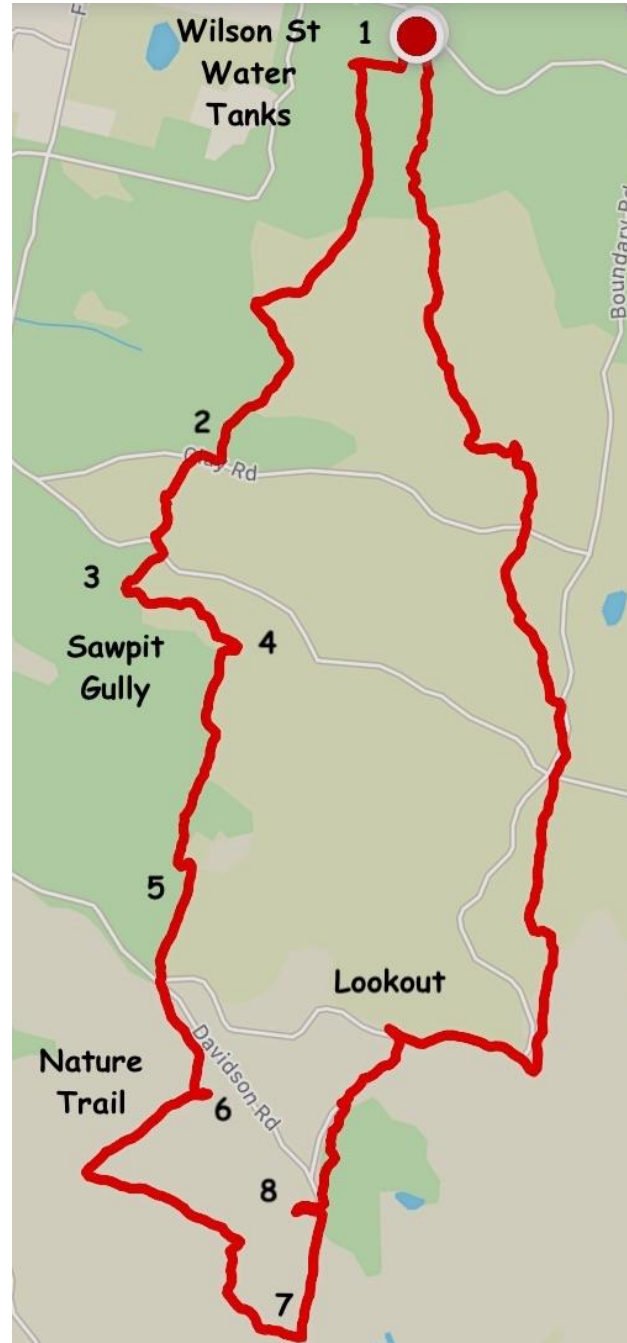
3. Pearces Dam

Pearce's Dam supplied water via a water race to the Pearce Quartz Crusher at Soapy's dam on Elsworth St. Operated from 1870's to 1908.



4. Sawpit Gully dam

Water was collected from as far away as Eureka St and transferred along water races to the dam for downstream alluvial gold sluicing.



8. Minefield grated shaft

This shaft is quite deep and is at the top of a gully. The gully has extensive shallow diggings and is known locally as the minefield.



7. Conglomerate Hill

This short adit may have connected with a shaft on top of the hill. It is about several metres long. The top of Conglomerate Hill is covered in conglomerate rock.



6. Nature Trail

A quite camouflaged shaft near the Nature Trail. The mine is around seven metres deep at present. Most likely the shaft was much deeper previously.



5. Multiple shafts

This site has a collection of shafts, most connected by horizontal shafts. The mine appears to be concentrating of a quartz outcrop.