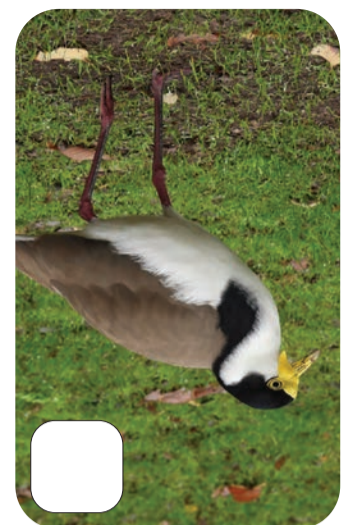


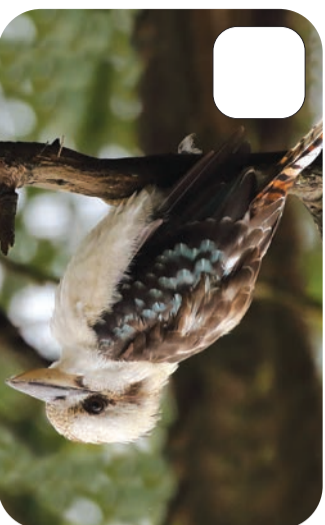
**Australian Wood Duck**  
50cm | JC  
Fact: AKKA Manded Duck  
Clue: Check dams, lakes, lawns



**Masked Lapwing**  
38cm | JC  
Fact: Left alone, I'm harmless  
Clue: Find me in open spaces



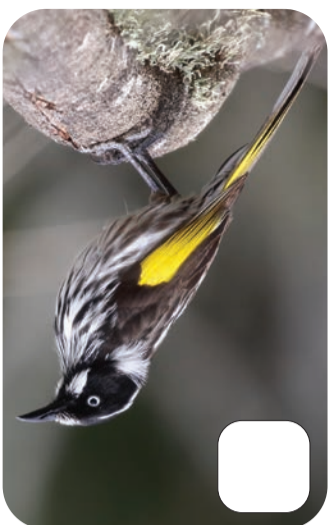
**Laughing Kookaburra**  
47cm | RL  
Fact: I'm a large, dry land kingfisher. Clue: Hear me, or check powerlines



**Yellow-tailed Black-Cockatoo**  
60cm | RL. Fact: I rely on pine trees for food. Clue: Talkative, leisurely in flight



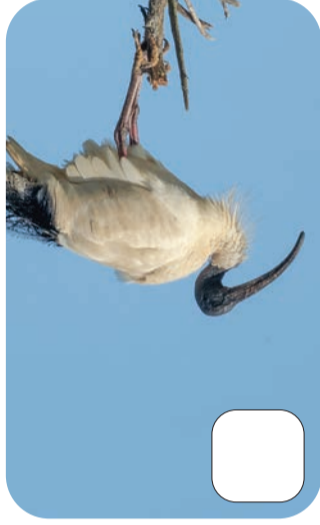
**New Holland Honeyeater**  
18cm | RL  
Fact: Common, mid-sized  
Clue: Loves gardens, urban parks



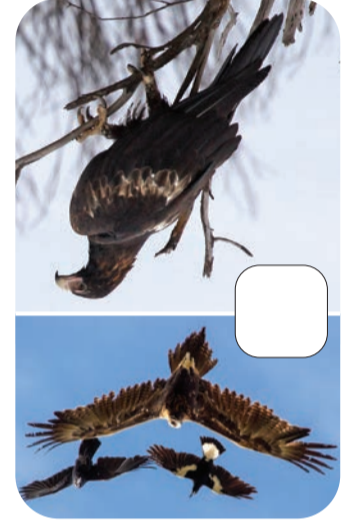
**Superb Fairywren**  
14cm | AM#: AB  
Fact: I prefer ferns and shrubs. Clue: Note, my tail held upright



**Australian (White) Ibis**  
75cm | JS  
Fact: Flocks fly in 'V' or line formation. Clue: I graze damp or flooded fields



**Wedge-tailed Eagle**  
110cm | RT#: AA#  
Fact: Highest flight, and farmland patrols. Clue: Magpies, ravens reveal me



**Sulphur-crested Cockatoo**  
50cm | RL  
Fact: I'm atop avian intelligence. Clue: Listen out for my squark!



**Galah**  
38cm | RL  
Fact: I eat seeds, grains  
Clue: Spends much time on ground



**Magpie-lark**  
31cm | JC, JC  
Fact: I prefer open habitat  
Clue: Male (top), female (bottom)



**Rainbow Lorikeet**  
31cm | RL  
Fact: Loves flowering gumtrees. Clue: Note, my blue and breast of orange



Birds



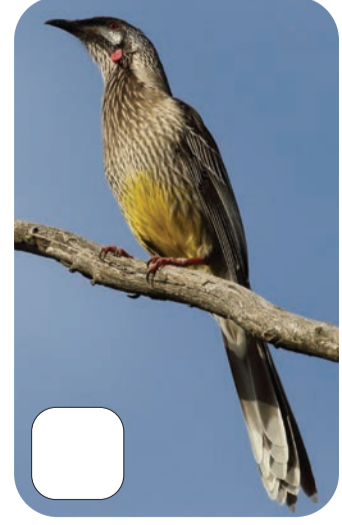
**Australian Magpie**  
44cm | JC  
Fact: I'm a protective parent. Clue: Live anywhere, eat anything



**Little Raven**  
50cm | JC  
Fact: Mistaken as 'crows'; Vic has ravens only, bar far NW  
Clue: I'm all-black, bearded



**Crimson Rosella**  
37cm | JC  
Fact: Feeds on ground, up trees  
Clue: Olive green = young



**Red Wattlebird**  
36cm | RL  
Fact: Largest local Honeyeater  
Clue: Red is my cheek 'wattle'

Birds

Did you see any additional species that are not featured on this list? Which ones? Record or draw, below.

Indigenous Wildlife of Southern Ballarat

**40 FAUNA - Checklist**

We acknowledge and pay our respects to the Wadawurrung People – Elders past, present, and emerging – of the Kulin Nation.

This edition features a selection of iconic, commonly seen, and easy-to-identify native birds, mammals, frogs, reptiles and insects. Forty species (plus the bonus 41st species on the cover), which can be found in Ballarat's forests, farmlands, gardens, residential areas, watercourses, and schoolyards! Included for each species is a fact and clue on where to find them or how to identify them. When you find a species tick the checkbox – bingo style! Images are not to scale.

**CONTACTS:**  
Leigh Catchment Group: leighcgc@cable.net.au • leighcatchmentgroup.org • Facebook: @LeighCatchmentGroup • Instagram: leigh\_catchment\_group  
Friends of Canadian Corridor: foccinfo@gmail.com • focc.asn.au • Facebook: @friendsofcanadiancorridor

**ACKNOWLEDGMENTS:**  
Grateful thanks to Ambika Bone (AB), Indra Bone (IB), Jeffrey Crawley (JC), Rob Loveband (RL), Jenny Sedgwick (JS), and Colin Trainor (CT), who generously donated their photos. Further credit to Andrew Allen (AA), Alan Melville (AM), Jenny Poss (JP), Reiner Richter (RR), Tricia Stewart (TS), and Ray Turnbull (RT), whose images were sourced from Atlas of Living Australia († denotes legal use, by Creative Commons licenses).

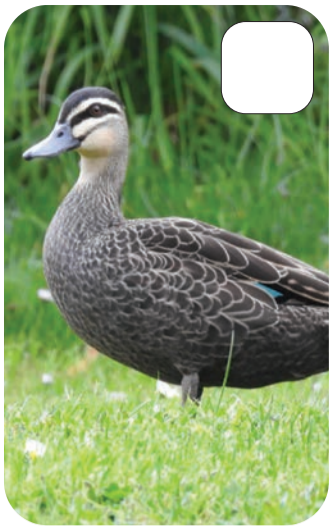
Cover image (Honeybrown Beetle, 2cm) by Reiner Richter.  
Compiled and designed by Joel Ellis (chief of editors) and Hayley Inglis (co-editor). Additional design by Colourfield Design. 2024

Birds

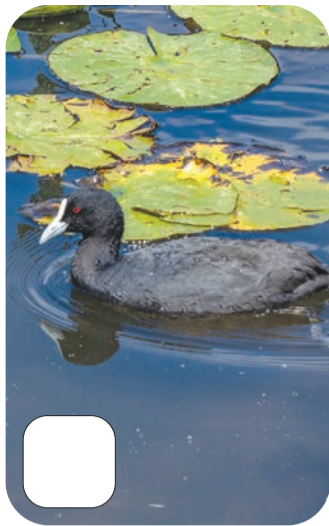
Indigenous Wildlife of Southern Ballarat  
**40 FAUNA Checklist**



Birds



**Pacific Black Duck**  
60cm | JC  
Fact: I'm common, widespread. Clue: Note, eye stripe, moustache



**Eurasian Coot**  
38cm | JS  
Fact: Name aside, I'm native Clue: Note, white bill/face shield



**Dusky Moorhen**  
40cm | JC  
Fact: At home on water, waterside Clue: Note, orange bill, legs

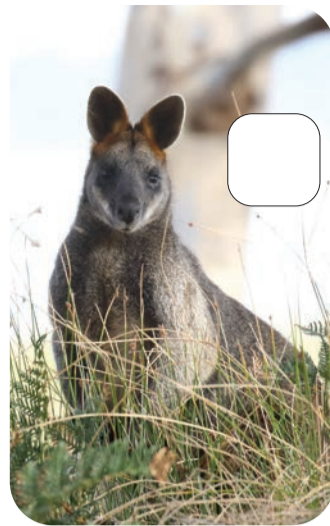


**White-faced Heron**  
69cm | JC  
Fact: Common heron Clue: Stalks shallows, drainage lines

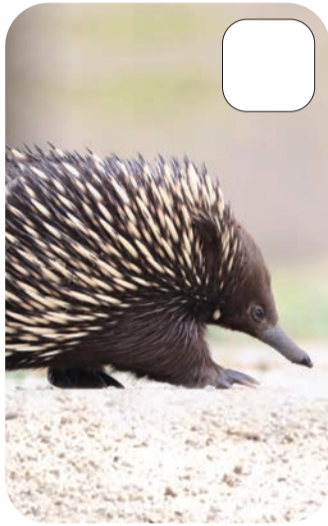
Mammals



**Eastern Grey Kangaroo**  
130cm | RL  
Fact: I'm most active at dawn/dusk. Clue: Unmistakably large, robust



**Swamp (Black) Wallaby**  
130cm | RL  
Fact: At home amongst ferns Clue: I'm darker, smaller than roos



**Short-beaked Echidna**  
44cm | IB  
Fact: I'm an egg-laying mammal! Clue: Prefer sandy soil, logs, undergrowth



**Koala**  
70cm | RL  
Fact: I can sleep 20 hours a day. Clue: Favourite food tree is Manna Gums (white bark)

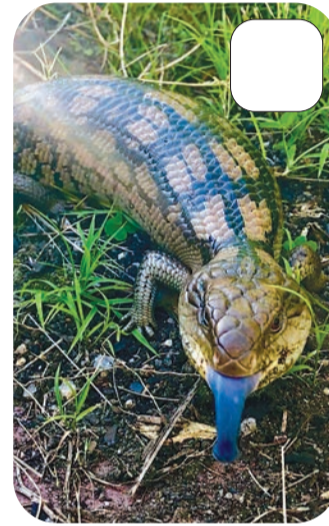
Frogs & Reptiles



**Eastern Banjo Frog**  
8cm | RR‡  
Fact: AKA 'Pobblebonk' Clue: Listen for my banjo call



**Southern Brown Tree Frog**  
4.5cm | AM‡  
Fact: I can be green too Clue: I can be found in dry places too



**Blotched Bluetongue**  
50cm | TS‡  
Fact: Eat snails, at farms, gardens. Clue: Winter hibernation; Stripes = Common Bluetongue

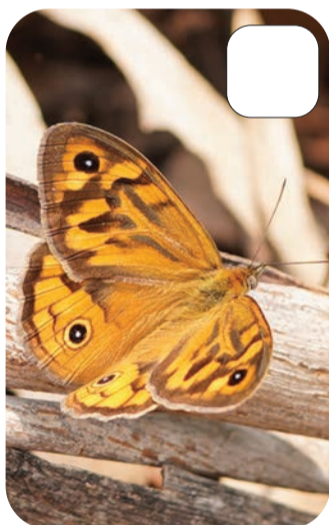


**Pale-flecked Garden Sunskink** 9cm | JC  
Fact: Yes, my tail drops off, but please do be gentle! Clue: AKA Common Garden Skink

Butterflies



**Common Grass-Blue**  
3cm | RR‡  
Fact: Most common small 'Blue' butterfly. Clue: Check unmown lawns



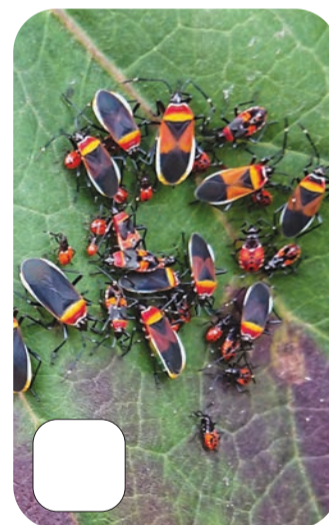
**Common Brown**  
6.5cm | RR‡  
Fact: Common, widespread Clue: Two colour varieties, one with beige wing patch



**Southern Moon Moth**  
8.5cm | RR‡  
Fact: AKA Southern Old Lady Clue: Note, the 'eyes' on wings



**Common Halfband**  
1cm | RR‡  
Fact: I'm a Dronefly, not a bee Clue: Note, my fly eyes



**Harlequin Red Bug**  
1cm | JP‡  
Fact: Common, widespread Clue: All ages look different, as per image



**Wingless Grasshopper**  
2cm | RR‡  
Fact: Flightless, unlike other grasshoppers Clue: I can be green too

Insects



**Australian Painted Lady**  
5cm | RR‡  
Fact: I'm no Monarch Clue: Note 'eyespot' of lower wing



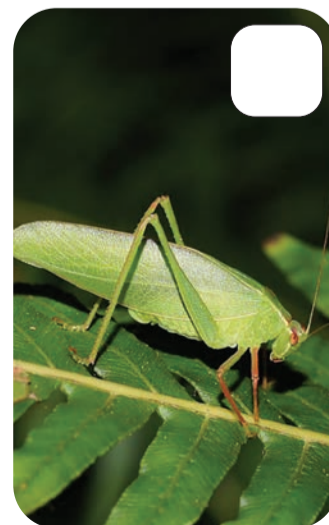
**Caper White**  
5.5cm | RR‡  
Fact: I'm no Cabbage White Clue: Note, stain-glass underwing



**Large Spotted Ladybird**  
0.8cm | RR‡  
Fact: Eats aphids which are more or less a plant lice Clue: Colour varies, spots don't



**Variegated Lady Beetle**  
0.7cm | RR‡  
Fact: AKA Spotted Amber Ladybeetle. Clue: Colour varies, spots don't



**Common Garden Katydid**  
4cm | RR‡  
Fact: Related to grasshoppers Clue: Leafy camouflage



**Australian Garden Mantis**  
4cm | RR‡  
Fact: Predator, harmless to you. Clue: AKA Australian Green Mantis